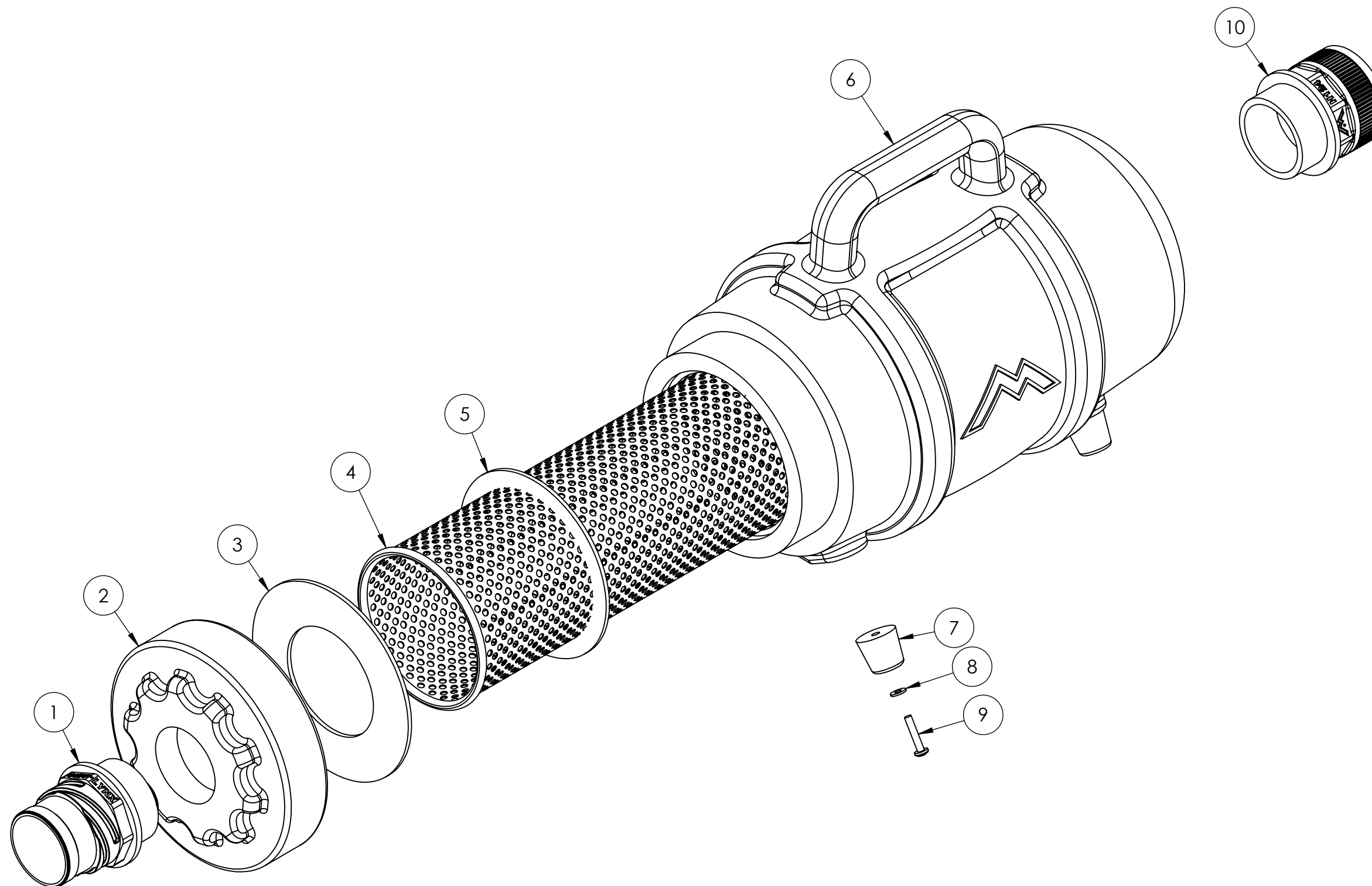
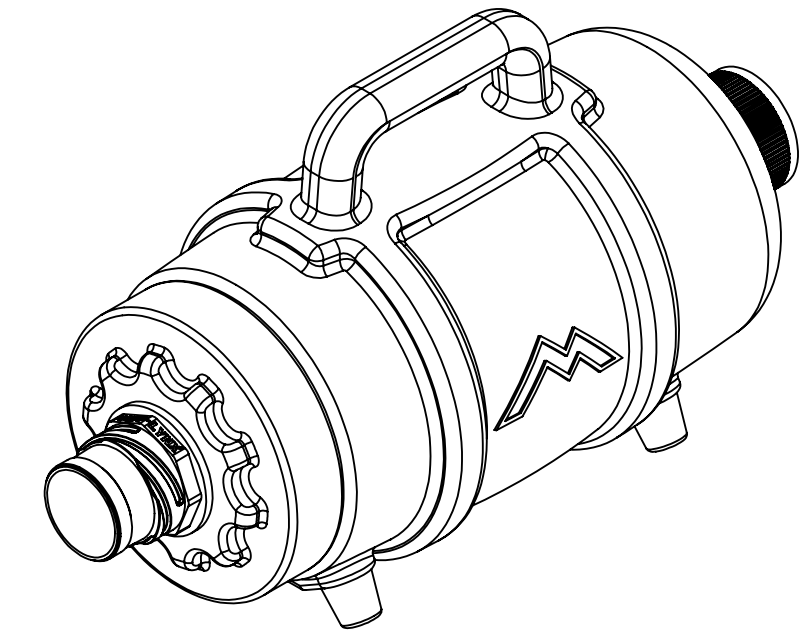


ITEM NO.	PART NO.	DESCRIPTION	QTY.
1	H135	Cuff-Lynx, 2" m cuff x 2" mpt	1
2	P561	cap, 6", threaded, w/ 2" npt	1
3	G031	gasket, 3.25" i.d. x 5.88" o.d.	1
4	H359A	bag, mesh, filter, w/stainless steel, ring, F200	1
5	G084	gasket, 4.55" x 5.5"	1
6	P563A	body, lint hog, new style	1
7	G211	rubber feet, 1-1/8" bas diag, 1" height	4
8	H612	washer, 8 flat, black oxide	4
9	H231	screw, 10-32 x 1" phil pan head, s/s	4
10	H124	Cuff-Lynx, 2" mpt x 2" female cuff	1

ACCESSORIES NOT SHOWN

PART NO.	DESCRIPTION	QTY.
ADM-F200	manual, lint hog, QR codes	1
G008	SEE PAK NUMBER black piglet filters - bag of 25	1
H110	Cuff-Lynx, 2" hose x 2" f swivel	1
H136	Cuff-Lynx, 2" hose x 2" male swivel	1
H141	Cuff-Lynx, 2" hose to 1.5" reducer	1



	NAME	DATE	MYTEE PRODUCTS, INC.		
DRAWN	M. LaBarbera	5/25/11	858-679-1191		
CHECKED			TITLE:		
<small>PROPRIETARY AND CONFIDENTIAL</small> <small>THE INFORMATION CONTAINED IN THIS DRAWING IS THE SOLE PROPERTY OF MYTEE PRODUCTS, INC. ANY REPRODUCTION IN PART OR AS A WHOLE WITHOUT THE WRITTEN PERMISSION OF MYTEE PRODUCTS, INC. IS PROHIBITED.</small>			<h1>Lint Hog</h1>		
			SIZE	DWG. NO.	REV
			C	F200	0D
			SCALE: 1:3	DO NOT SCALE DRAWING	SHEET 1 OF 1